



FLR

TECHNICAL

Materials of Optics	PC Lens & Glass
Materials of Housing	Made of high pressure die cast aluminum alloy, chemically treated & polyester powder coated.
Light Source	SMD (SCDM <3)
Color Temperature	3000K/ 4000K/ 5000K/ 5700K
Luminous Efficiency@5000K	140 Lum/W
CRI	>80
Beam Angle(°)	10/15 Deg
UGR	-
Lifetime(hr)	>94,000h
Product Finishing	Black



FEATURES & BENEFITS

LED Driver	Built-In
Dimming Option	Dali/1-10V
Functions	Power adjustable for different light outputs
Ingress Protection (IP Rating)	IP66
Impact Resistance (IK Rating)	IK08/IK10
Power Factor (PF)	> 0.92
Certification	

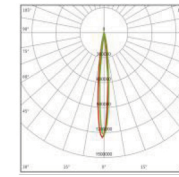


MODEL REF.

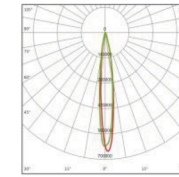
Standard CCT 5000K

CODE	WATT	INPUT VOLTAGE(V)	SIZE(AxBxCmm)	LUMEN(±5%)	N.W/pc(kgs)
FLR-600	600W	220-240V AC	411x583x436	84000	12.8
DRIVER BOX(600W)	600W	220-240V AC	458x278x159	-	9.7
DRIVER BOX (1200W)	1200W	220-240V AC	458x278x159	-	13.5

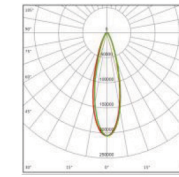
Photometry



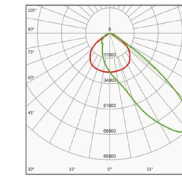
F02501
10°



F02502
15°



F02503
30°



F25204
Type II very short

Mounting Options



Arm bracket mount



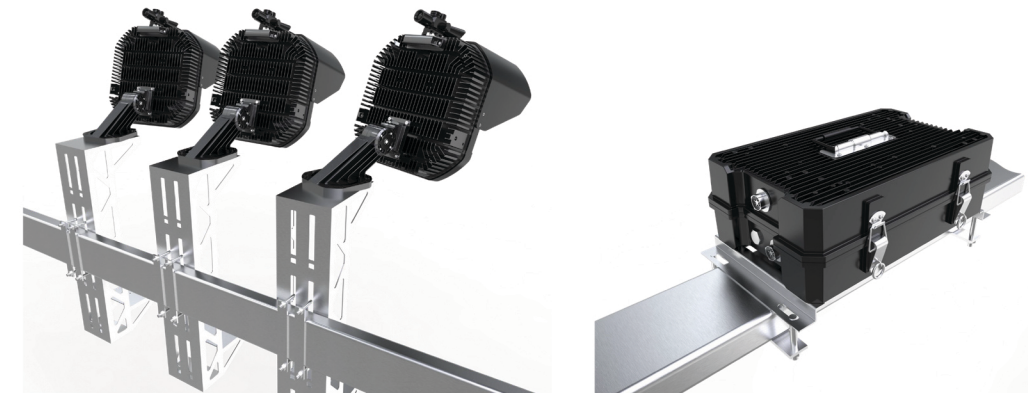
U bracket mount



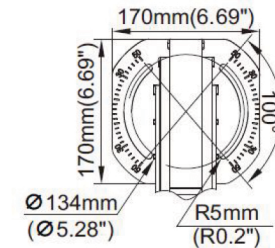
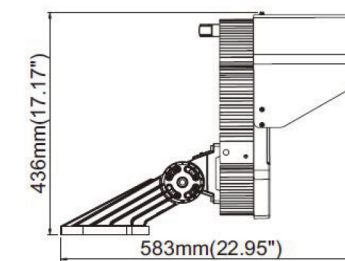
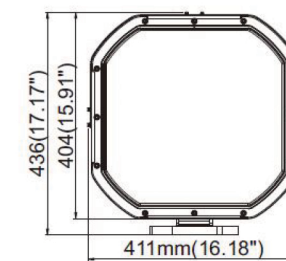
Remote driver box



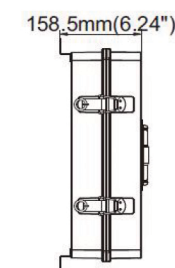
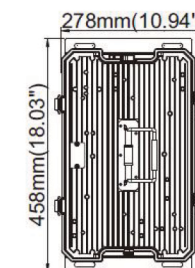
Back up driver box



Dimensions



Fixture



600W/1200W Driver box