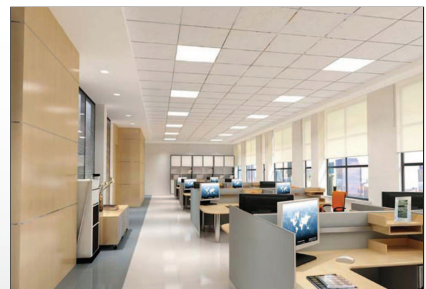
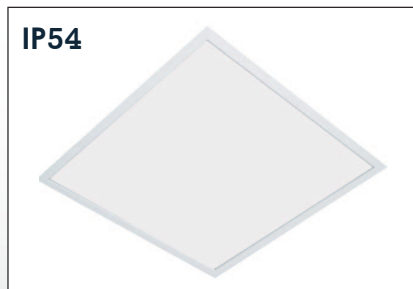
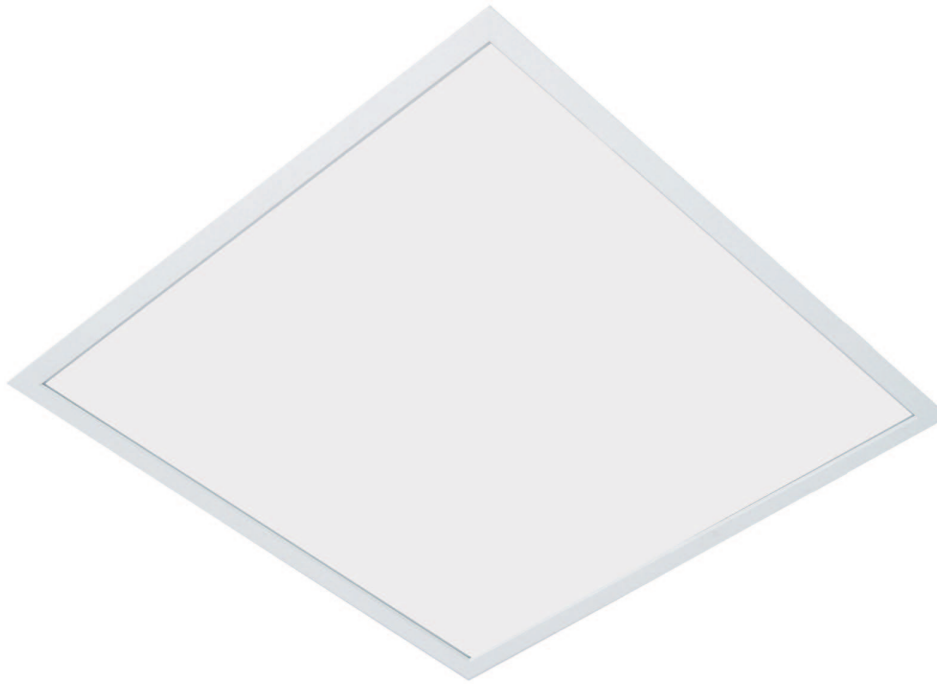


ODR



PRODUCT CODES				
	ODR3030-1340/13	ODR 6060 3600/26	ODR6060-4682/39	ODR30120 - 4682/39
CONSTRUCTION:				
Housing & Optics:	In trimmed sheet steel, chemically treated surface to corrosion class II by high pressure spraying at 2.5 bar before its finally electrostatically powder coated with a 60 micron thermo-hardened polyurethane powder, stabilized and UV protected. Optics made of high temperature UV stabilized PMMA material. Excellent optical characteristics with high transmission, diffusion rate, special micro embossing, and free static treatment.			
Mounting Device	Recess mounting and supported using suspension kits / threaded rods.			
Product Dimension (mm)	297 x 297 x 90	597 x 597 x 90	597 x 597 x 90	297 x 1197 x 90
Product Color	RAL9016			
ELECTRICAL:				
Input Voltage	220-240V AC			
Frequency	50-60 Hz			
Power Factor	> 0.90			
Power Consumption	13W	26W	39W	39W
Power Consumption Tolerance	+/-10%			
Protection Class	Safety Class(I)			
Glow Wire Test	850 deg C /30 Sec			
CONTROLS:				
Dimmable	Optional			
Dimming Options (Variant)	Dali / 1-10V			
PERFORMANCE:				
Luminaire Lumens	1340	3600	4682	4682
CCT	5000K (S) - 4000K / 3000K (O)			
CRI	>80			
Initial Chromacity	SCDM <3			
Lumen Maintenance	L80 / B10 > 90000hrs @ 25° C			
Operating Ambient Temperature	+10 to + 55° C			
Storage Temperature	-20 to + 80° C			
Ripple on Modules	<3%			
GENERAL:				
Ingress Protection	IP40			
Impact in Joules	IK03			
Replaceable Modules	Yes			
Luminaire Beam Angle	90 deg			
CE Markings	Yes			
Net Weight	1.4 Kgs	1.4 Kgs	2.5 Kgs	3 Kgs
VARIANTS:				

Available in IP54 & IP65 Version. Please add IP54/IP65 to the suffix of the code.

Required variants to be added to the suffix of the code of the fixture.

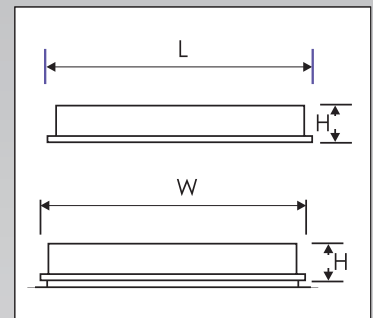
For Metal Tray Ceiling, Please order for mounting clamps separately using the code MT to the suffix of the code.

Suspension Kit to be ordered separately using the code SK to the suffix of the product code.

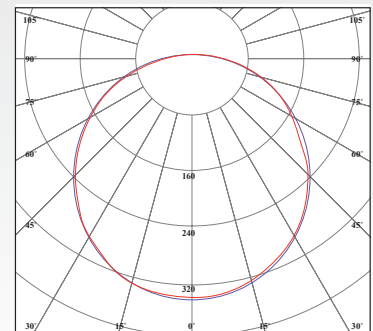
Note: Lumens, wattage & dimensions are subject to change due to the fast development in LED technology.

How to Specify :

.....Lm and a min. oflm/w
 Recessed LED modular fitting made of Zinc coated steel, powder coated to corrosion class II with micro embossing PMMA diffuser and ENEC certified LED modules & driver, L80 / B10 > 90000hrs @ 25° C lumen maintenance,color temperature, IP40.



Luminous Intensity Distribution



Luminous intensity (cd/klm) in level C 0° - 180°
 Luminous intensity (cd/klm) in level C 90° - 270°