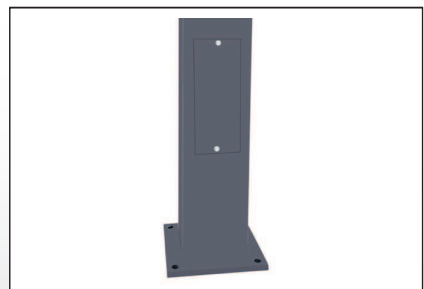
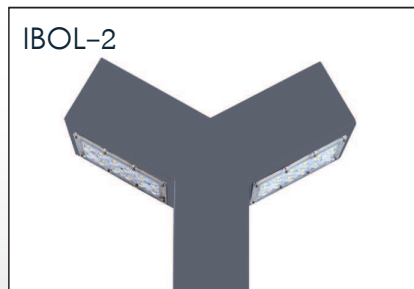
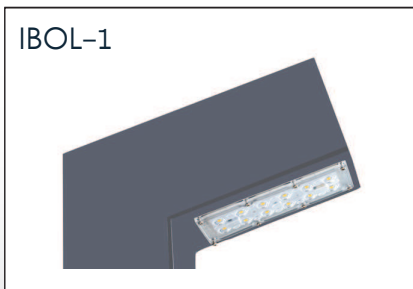
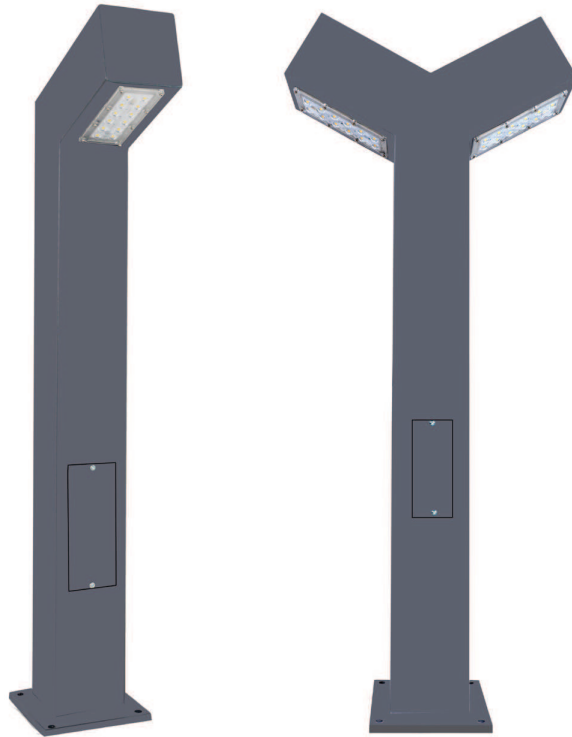


IBOL



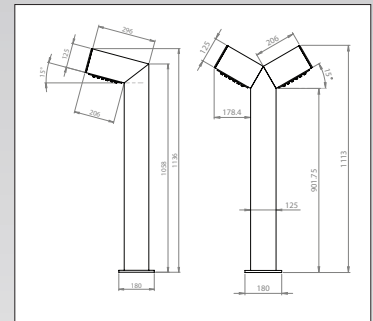
PRODUCT CODES		
	BOL-2000/11	IBOL2-4000/22
CONSTRUCTION:		
Housing & Optics.	Made of high tensile steel grade mechanically joined with an extruded Anodized aluminum alloy, all chemically treated, and polyester powder coated to corrosion class II. Optics made of high heat resistance silicon material suitable for, type II optimized lens as standard with excellent transmission efficiency of 93%, high thermal stability and UV resistant.	
Mounting Device	Floor Mounting using Provided Base Plate	
Product Dimension (mm) L x W x H	1000 x 125	1000 x 125 x 125
Product Color	RAL7042	
ELECTRICAL:		
Input Voltage	220-240V AC	
Frequency	50-60 Hz	
Power Factor	> 0.90	
Power Consumption	11W	22W
Power Consumption Tolerance	+/-10%	
Protection Class	Safety Class (I)	
Glow Wire Test	850 deg C /30 Sec	
CONTROLS:		
Dimmable	NA	
Dimming Options (Variant)	NA	
PERFORMANCE:		
Luminaire Lumens	2000 Lmns	4000 Lmns
CCT	5000K (S) - 4000K / 3000K / 2700K (O)	
CRI	>70	
Initial Chromacity	SCDM <3	
Lumen Maintenance	L90 / B10 > 80000hrs @ 65° C	
Operating Ambient Temperature	+10 to + 55° C	
Storage Temperature	-20 to + 80° C	
Ripple on Modules	<3%	
GENERAL:		
Ingress Protection	IP66	
Impact in Joules	IK09	
Replaceable Modules	Yes	
Luminaire Beam Angle	90 deg	
CE Markings	Yes	
Net Weight	7 Kgs	

Note: Lumens, wattage & dimensions are subject to change due to the fast development in LED technology.

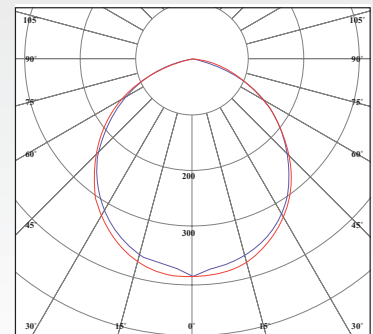
How to Specify :

.....Lm and a min. oflm/w LED Garden Light made of 6063 extruded aluminum, powder coated to corrosion class II, with optics made of high heat resistance silicon material, ENEC certified LED modules & driver, L90 / B10 > 80000hrs @ 65° C lumen maintenance,color temperature, IP66 and in full conformity with :

- EN60598
- EN 55015
- EN61000
- EN61347
- EN61547
- EN62031
- EN62471
- EN62031
- EN62778



Luminous Intensity Distribution



Luminous intensity (cd/klm) in level C 0° - 180°
Luminous intensity (cd/klm) in level C 90° - 270°