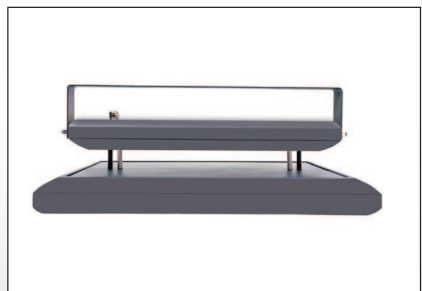
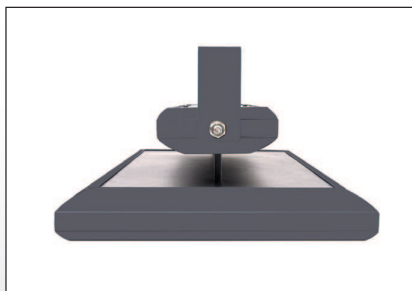


HBL-H



PRODUCT CODES				
	HBLH-25000/204	HBLH-30000/250	HBLH-35000/290	HBLH-40000/330
CONSTRUCTION:				
Housing & Optics.	Made of high purity 6063 anodized aluminum alloy , chemically treated, and polyester powder coated. Optics made of PMMA suitable for operations under high temperature, 90 degree distribution beam angle as standard with excellent transmission efficiency of 93%, high thermal stability and UV resistant and protected with thermally treated flat toughed glass.			
Mounting Device	Surface / Suspension Mounting using threaded Rod.			
Product Dimension (mm) L x W x H	428 x 380 x 165	498 x 380 x 165	568 x 380 x 165	638 x 380 x 165
Product Color	RAL7042			
ELECTRICAL:				
Input Voltage	220-240V AC			
Frequency	50-60 Hz			
Power Factor	> 0.90			
Power Consumption	204W	250W	290W	330W
Power Consumption Tolerance	+/-10%			
Protection Class	Safety Class(I)			
Glow Wire Test	850 deg C /30 Sec			
CONTROLS:				
Dimmable	NA			
Dimming Options (Variant)	Dali / 1-10V			
PERFORMANCE:				
Luminaire Lumens	25000	30000	35000	40000
CCT	5000 (S) / 4000 / 3000 K			
CRI	>70			
Initial Chromacity	SCDM <3			
Lumen Maintenance	L90 / B10 > 80000hrs @ 65° C			
Operating Ambient Temperature	+10 to + 55° C			
Storage Temperature	-20 to + 80° C			
Ripple on Modules	<3%			
GENERAL:				
Ingress Protection	IP66			
Impact in Joules	IK09			
Replaceable Modules	Yes			
Luminaire Beam Angle	90 deg			
CE Markings	Yes			
Net Weight	13 Kgs	13 Kgs	14 Kgs	16 Kgs
VARIANTS:				

Available in Different Beam Angles for specific design requirements/applications. Please refer to Page 113.

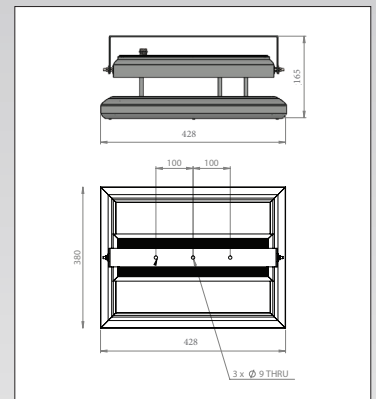
Required variants to be added to the suffix of the code of the fixture. (S)- Standard (O)- Option.

Note: Lumens, wattage & dimensions are subject to change due to the fast development in LED technology.

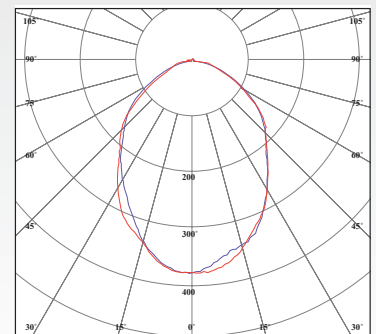
How to Specify :

.....lm and a min. oflm/w
 LED Highbay made of 6063 extruded aluminum, powder coated to corrosion class II with PMMA lenses and ENEC certified LED modules & driver, L90 / B10 > 80000hrs @ 65° C lumen maintenance, color temperature, IP66 and in full conformity with :

- EN60598
- EN 55015
- EN61000
- EN61347
- EN61547
- EN62031
- EN62471
- EN62031
- EN62778



Luminous Intensity Distribution



Luminous intensity (cd/klm) in level C 0° - 180°
 Luminous intensity (cd/klm) in level C 90° - 270°