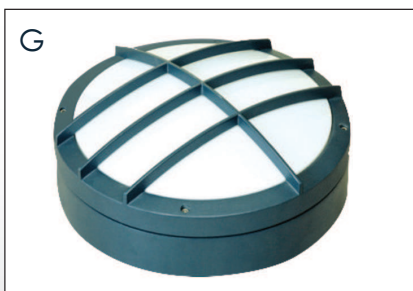


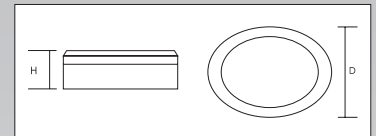
BH



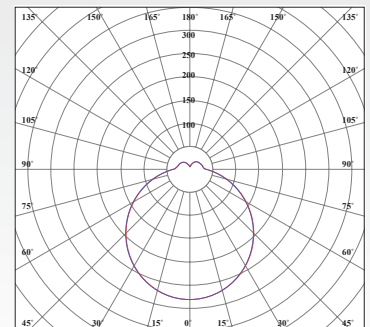
PRODUCT CODES		
	BH275-2000/18	BH350-3350/29
CONSTRUCTION:		
Housing & Optics.	Made of high pressure die-cast aluminum alloy finished to corrosion class II by high pressure spraying at 2.5 bar before its finally electro-statically powder coated with a 60 micron thermo-hardened polyester powder, stabilized and UV protected. Optics is made of stabilized and UV protected PC material	
Mounting Device	Wall Mounting	
Product Dimension (mm) D x H	275 x 95	350 x 142
Product Color	RAL9016	
ELECTRICAL:		
Input Voltage	220-240V AC	
Frequency	50-60 Hz	
Power Factor	> 0.90	
Power Consumption	18W	29W
Power Consumption Tolerance	+/-10%	
Protection Class	Safety Class(I)	
Glow Wire Test	850 deg C /30 Sec	
CONTROLS:		
Dimmable	NA	
Dimming Options (Variant)	NA	
PERFORMANCE:		
Luminaire Lumens	2000	3350
CCT	5000K (S) – 4000K / 3000K / 2700K (O)	
CRI	>80	
Initial Chromacity	SCDM <3	
Lumen Maintenance	L80 / B10 > 90000hrs @ 25° C	
Operating Ambient Temperature	+10 to + 55° C	
Storage Temperature	-20 to + 80° C	
Ripple on Modules	<3%	
GENERAL:		
Ingress Protection	IP65	
Impact in Joules	IK03	
Replaceable Modules	Yes	
Luminaire Beam Angle	90 deg	
CE Markings	Yes	
Net Weight	1.8 Kgs	2.2 Kgs
VARIANTS:		
Available with guard ring and half eyelid covers. Please add (G) or (H) to the code of the fixture if required.		
Note: Lumens, wattage & dimensions are subject to change due to the fast development in LED technology.		

How to Specify :

.....Lm and a min. oflm/w
 LED Bulkhead made of high pressure cast aluminum, powder coated to corrosion class II with PC Diffuser and ENEC certified LED modules & driver, L80 / B10 > 90000hrs @ 25° C lumen maintenance, color temperature, IP65.



Luminous Intensity Distribution



Luminous intensity (cd/klm) in level C 0° – 180°
 Luminous intensity (cd/klm) in level C 90° – 270°