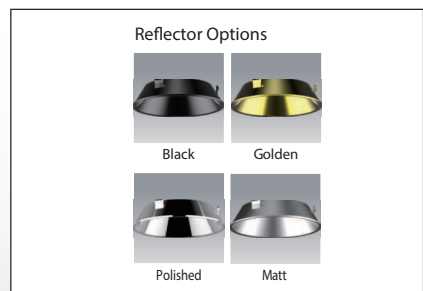
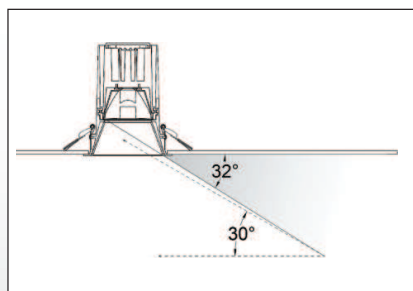
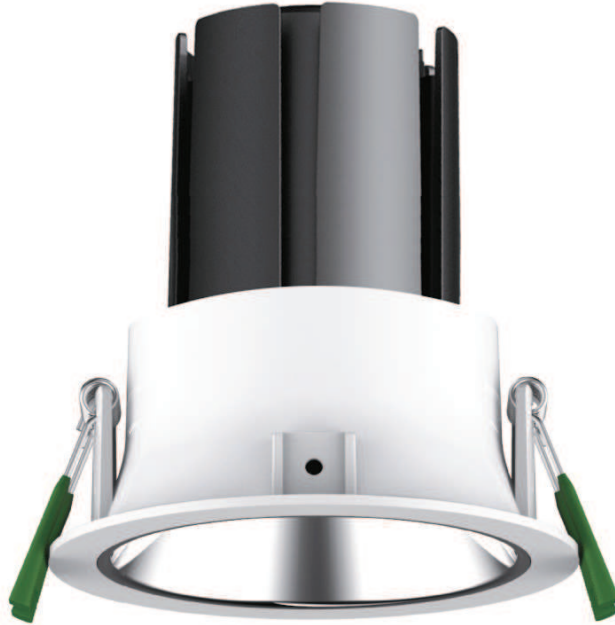


ADL-32



PRODUCT CODES				
	ADL 32 - 1350/15	ADL 32 - 1650/18	ADL 32 - 1980/22	ADL 32 - 2160/24
CONSTRUCTION:				
Housing & Optics.	Made of cast aluminum frame chemically treated surface to corrosion class II by high pressure spraying at 2.5 bar before its finally electrostatically powder coated with a 60 micron thermo-hardened polyurethane powder, stabilized and UV protected. Optics made of Polished Aluminum Reflector.			
Mounting Device	Recess Mounting with Spring Clips			
Product Dimension (mm) D x H x RC	102 x 131 x 90			
Product Color	RAL9010			
ELECTRICAL:				
Input Voltage	220-240V AC			
Frequency	50-60 Hz			
Power Factor	> 0.90			
Power Consumption	15W	18W	22W	24W
Power Consumption Tolerance	+/-10%			
Protection Class	Safety Class(II)			
Glow Wire Test	850 deg C /30 Sec			
CONTROLS:				
Dimmable	Optional			
Dimming Options (Variant)	Dali / 1-10V / SMART CONTROLS			
PERFORMANCE:				
Luminaire Lumens	1350	1650	1980	2160
CCT	4000K (S) / 3000K / 2700K (O)			
CRI	>80			
Initial Chromacity	SCDM <3			
Lumen Maintenance	L80 / B10 > 60000hrs @ 25° C			
Operating Ambient Temperature	+10 to + 55° C			
Storage Temperature	-20 to + 80° C			
Ripple on Modules	<3%			
GENERAL:				
Ingress Protection	IP40			
Impact in Joules	IK03			
Replaceable Modules	Yes			
Luminaire Beam Angle	90 deg			
CE Markings	Yes			
Net Weight	0.500 Kgs			

Available in 18° 24° 38° 55° Beam Angles - Code + Beam Angle Code

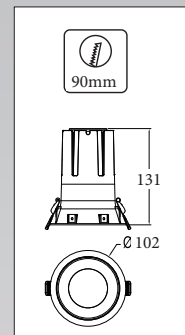
IP54 Version available upon Request. Bigger dia with higher lumens are available from same family.

Required variants to be added to the suffix of the code of the fixture.

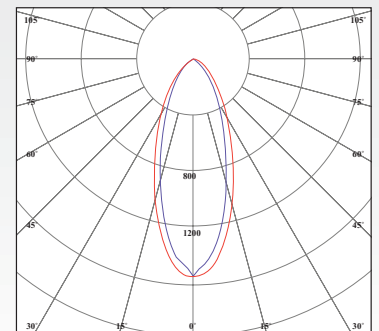
Note: Lumens, wattage & dimensions are subject to change due to the fast development in LED technology.

How to Specify :

.....Lm and a min. oflm/w
 Recessed LED downlight fixture made of die cast aluminum frame, powder coated to corrosion class II with low glare optics, L80 / B10 > 60000hrs @ 25° C lumen maintenance,color temperature, IP40.



Luminous Intensity Distribution



Luminous intensity (cd/klm) in level C 0° - 180°
 Luminous intensity (cd/klm) in level C 90° - 270°