

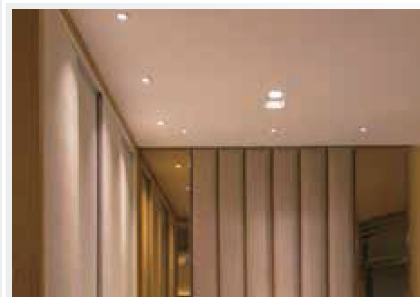
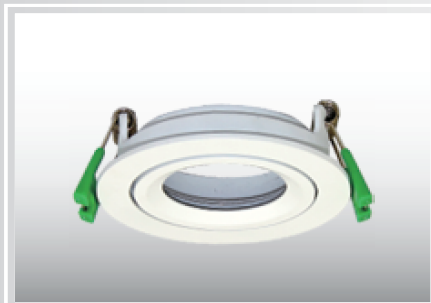
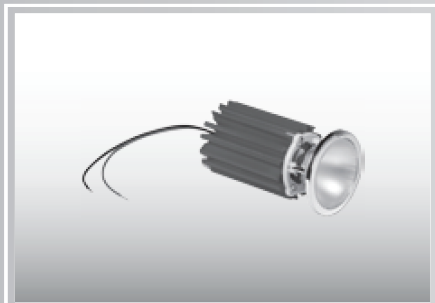
SLD



IP 40 CLASS I Ⓢ 960°C ⚡ Ⓢ CE

52

maJELITE



- Body** : made of high pressure die cast aluminum alloy, chemically treated surface to corrosion class II by high pressure spraying at 2.5 bar before its finally electro-statically powder coated with a 60 micron thermo-hardened polyurethane powder, stabilized and UV protected.
- Optics** : made of high purity anodized specular spun aluminum, round white reflector, and glare control diffuser.
- Electrical** : 240v/50Hz supply, 105° heat resistant PVC wire, 3- P terminal block in polyamide material
- Options** : different lumens output, wattages, an are availbled other varints on request. Please refer to page 170 for common varints and add suffix to below standard models references, wherever applicable.

Model Ref.	LED Lumens / Wattage	D x H x RC (mm)
SLD-615/5	615/5	80x80x70
SLD-750/7	750/7	80x80x70
SLD-960/8.7	960/8.7	80x80x70
SLD-1160/10.6	1160/10.6	80x100x70
SLD1300/12.5	1300/12.5	80x100x70

Note : Lumens & Wattages are subject to change due to the fast developments in LED technology.



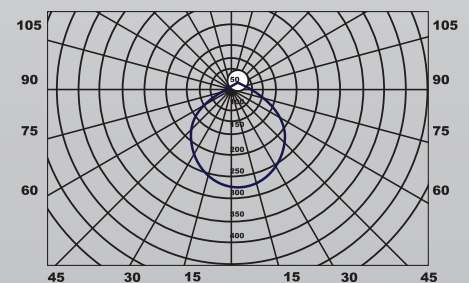
How to Specify :

80mm Recessed downlight with cast Aluminum deep frame and glare control diffuser with side latching high tensile springs

MAJELITE

53

Luminous Intensity Distribution



Luminous intensity (cd/klm) in level C 0° - 180°
Luminous intensity (cd/klm) in level C 90° - 270°