

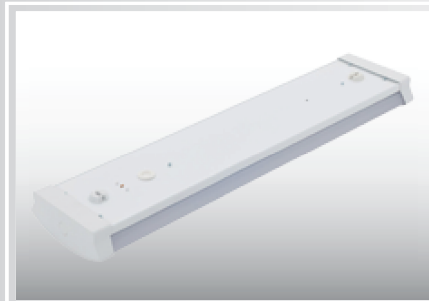
# PCC



IP 40 CLASS I Ⓢ 960°C ⚡ Ⓢ CE

40

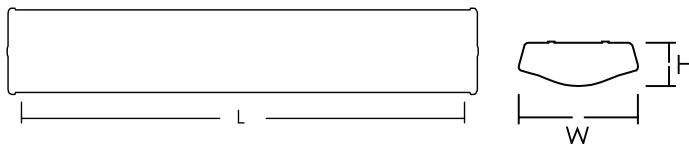
*maJELITE*



- Body** : in trimmed sheet steel, chemically treated surface to corrosion class II by high pressure spraying at 2.5 bar before its finally electro-statically powder coated with a 60 micron thermo-hardened polyurethane powder, stabilized and UV protected.
- Optics** : made of high temperature stabilized and UV protected curved Opal PMMA diffuser and PC end caps.
- Electrical** : 240v/50Hz supply, 105<sup>o</sup> heat resistant PVC wire, 3-P terminal block in polyamide material.
- Options** : different lumens output, wattages, and other variants are available upon request. Please refer to page no 170 for some common variants and add suffix to below model references, wherever applicable

Model Ref.	LED Lumens/ Wattage	L x W x H (mm)
PCC60-2320/17.7	2900 /16.4	610x146x58
PCC120-4640/36	5800/ 32.8	1170x146x58
PCC150-5808/45	7260 / 41	1450x146x58

**Note** : Lumens & Wattages are subject to change due to the fast developments in LED technology.



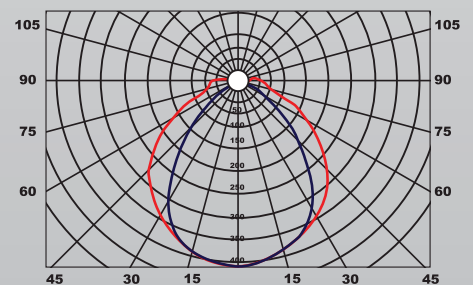
## How to Specify :

Surface modular fitting made of Zinc and powder coated steel with extruded curved PMMA diffuser, IP40. Similar to PCC.....

**maJELITE**

41

Luminous Intensity Distribution



Luminous intensity (cd/klm) in level C 0° - 180°  
Luminous intensity (cd/klm) in level C 90° - 270°