

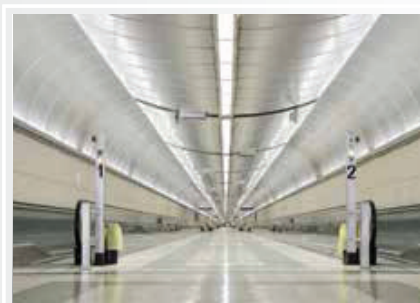
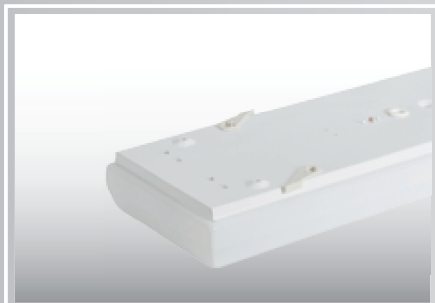
OD



IP 40 CLASSI Ⓢ 960°C ⚡ Ⓢ CE

36

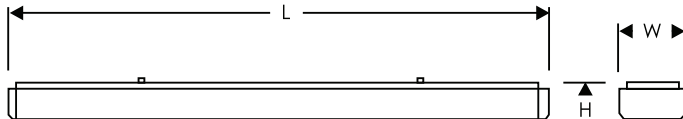
*maJELITE*



- Body** : in trimmed sheet steel, chemically treated surface to corrosion class II by high pressure spraying at 2.5 bar before its finally electro-statically powder coated with a 60 micron thermo-hardened polyurethane powder, stabilized and UV protected.
- Optics** : made of high temperature stabilized and UV protected one piece injection molded high temperature opal PMMA diffuser.
- Electrical** : 240v/50Hz supply, 105<sup>o</sup> heat resistant PVC wire, 3-P terminal block in polyamide material.
- Options** : different lumens output, wattages, and other variants are available upon request. Please refer to page no 170 for some common variants and add suffix to below model references wherever applicable.

Model Ref.	LED Lumens / Wattage	L x W x H (mm)
OD60-2030/18	2900 /16.4	665x110x65
OD120-4060/36	5800/ 32.8	1270x110x65
OD150-5082/45	7260 / 41	1570x110x65

**Note** : Lumens & Wattages are subject to change due to the fast developments in LED technology.



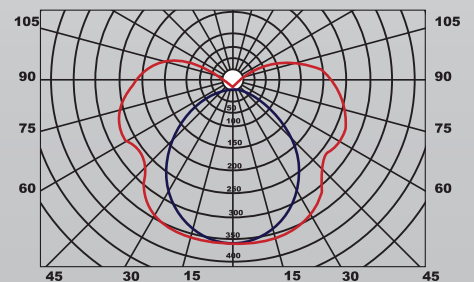
## How to Specify :

Surface modular fitting made of Zinc and powder coated steel with one piece injection molded PMMA diffuser with side latching clips, IP40. Similar to OD.....

**MAJELITE**

37

Luminous Intensity Distribution



Luminous intensity (cd/klm) in level C 0° - 180°  
Luminous intensity (cd/klm) in level C 90° - 270°