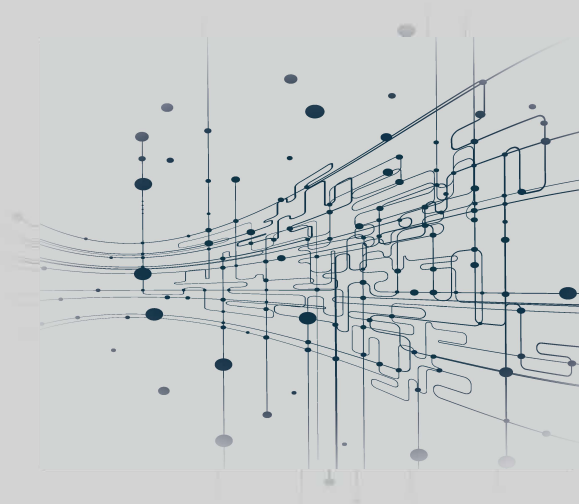




**Majelite**  
THE LIGHTING LANGUAGE

## LED Linear Range



## ***MAJELITE***

LED Linear range is made of 6063 grade extruded Aluminum profiles with PC click-in diffusers and 162lm/W efficacy for architectural, cove, and general lighting applications.

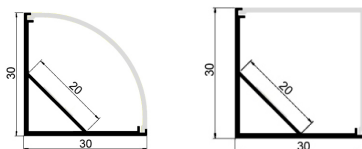
All fitted with ENEC certified L80B10, 50,000hrs LED strips, ripple free ENEC certified constant current drivers with dip switch for current adjustment, and various connectors and controllers to meet most customer's functional needs.

All in conformity with: EN50581, EN55015, EN61547, EN62031, EN62031, EN62778, UL8750, EN50172, EN61000-3-2 &3, EN61347-1 &2, and EN62384.

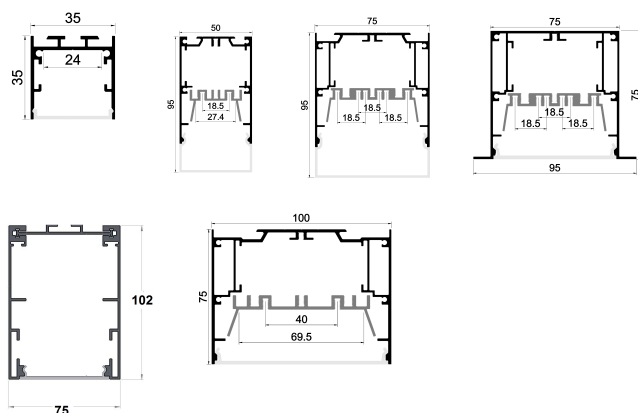


# CONTENTS

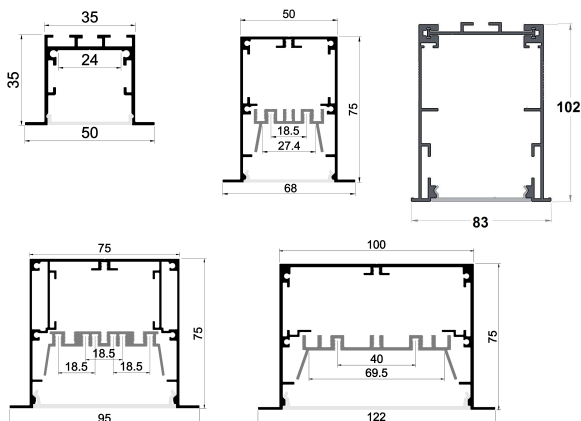
## Corner



## Suspended & Surface



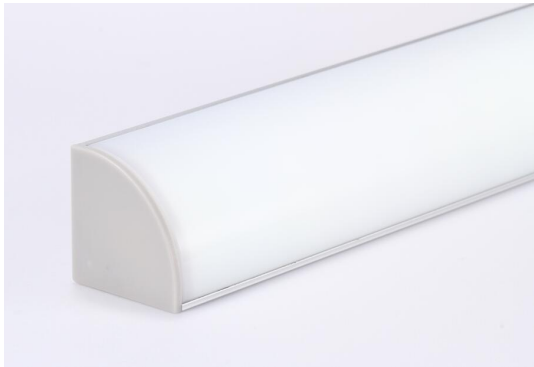
## Recessed



Corner



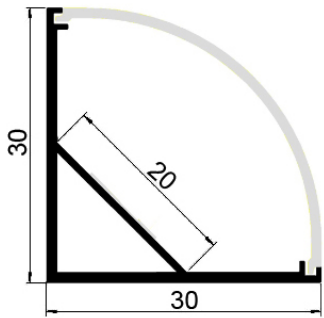




## LCC3030

### Description

30\*30mm Aluminum profile  
with PC diffuser fitted with  
LED strip  
120°viewing angle  
Interior design(IP20)  
Mounting brackets for easy  
installation



### Technical parameters:

Model Ref	LCC3030-X*140
Length	available in multiples of 140mm plus 6mm
Wattage/140mm	2.1 W
lumens /140mm	340 lm
Lumen efficacy	162 lm/w
CRI	>80

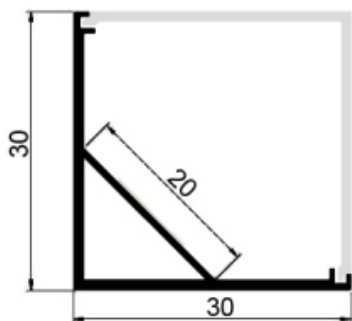
To order please specify an intergral number of X in above model ref. for the required linear length which can only be a multiple of 140mm.



## LCS3030

### Description

30\*30mm Aluminum profile  
with PC diffuser fitted with  
LED strip  
120°viewing angle  
Interior design(IP20)  
Mounting brackets for easy  
installation



### Technical parameters:

Model Ref	LCS3030-X*140
Length	available in multiples of 140mm plus 6mm
Wattage/140mm	2.1 W
lumens /140mm	340 lm
Lumen efficacy	162 lm/w
CRI	>80

To order please specify an integral number of X in above model ref. for the required linear length which can only be a multiple of 140mm.

## Suspended & Surface

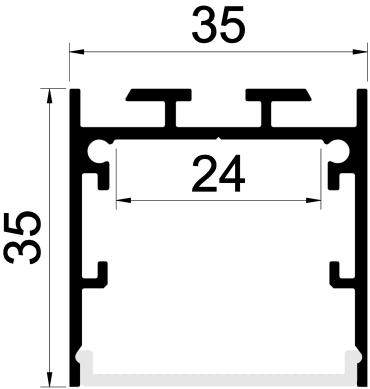




**LNS3535**

**Description**

35\*35mm Aluminum profile  
with PMMA diffuser fitted with  
LED strip  
120°viewing angle  
Interior design(IP20)  
Mounting brackets for easy  
installation



**Technical parameters:**

Model Ref	LNS3535-X*140
Length	available in multiples of 140mm plus 4mm
Wattage/140mm	2.1 W
lumens /140mm	340 lm
Lumen efficacy	162 lm/w
CRI	>80

To order please specify an intergral number of X in above model ref. for the required linear length which can only be a multiple of 140mm.

## LNS5095

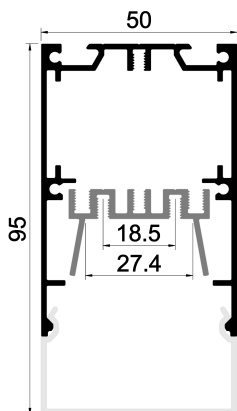
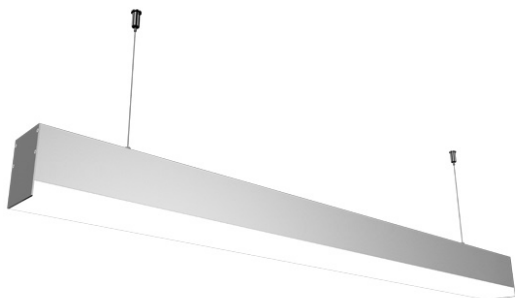
### Description

50\*95mm Aluminum profile  
with PMMA diffuser fitted with  
LED strip

180°viewing angle

Interior design(IP20)

Mounting brackets for easy  
installation



### Technical parameters:

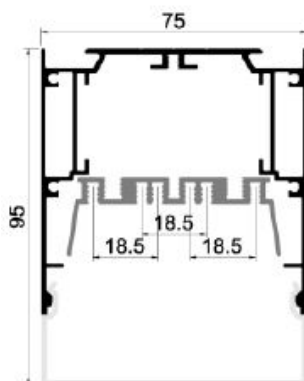
Model Ref	LNS5095-X*140
Length	available in multiples of 140mm plus 4mm
Wattage/140mm	2.1 W
lumens /140mm	340 lm
Lumen efficacy	162 lm/w
CRI	>80

To order please specify an intergral number of X in above model ref. for the required linear length which can only be a multiple of 140mm.

## LNS7595

### Description

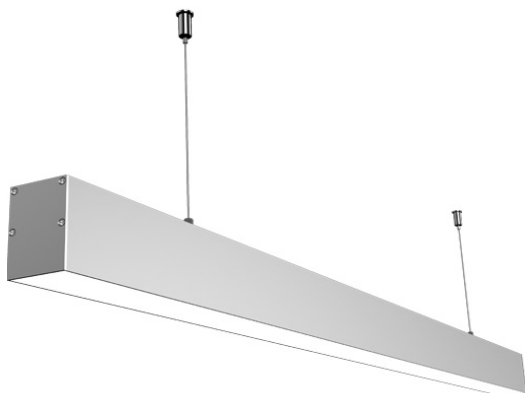
75\*95mm Aluminum profile  
with PMMA diffuser fitted with  
LED strip  
180°viewing angle  
Interior design(IP20)  
Mounting brackets for easy  
installation



Technical parameters:

Model Ref	LNS7595-X*140
Length	available in multiples of 140mm plus 4mm
Wattage/140mm	4.2 W
lumens /140mm	680 lm
Lumen efficacy	162 lm/w
CRI	>80

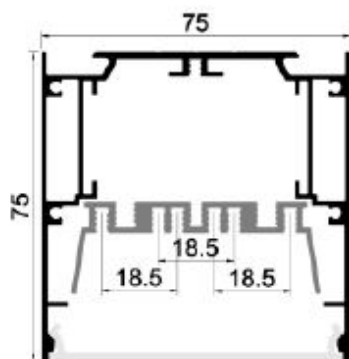
To order please specify an integral number of X in above model ref. for the required linear length which can only be a multiple of 140mm.



## LNS7575

### Description

75\*75mm Aluminum profile  
with PMMA diffuser fitted with  
LED strip  
120°viewing angle  
Interior design(IP20)  
Mounting brackets for easy  
installation



### Technical parameters:

Model Ref	LNS7575-X*140
Length	available in multiples of 140mm plus 4mm
Wattage/140mm	4.2 W
lumens /140mm	680 lm
Lumen efficacy	162 lm/w
CRI	>80

To order please specify an intergral number of X in above model ref. for the required linear length which can only be a multiple of 140mm.

## LNS75102



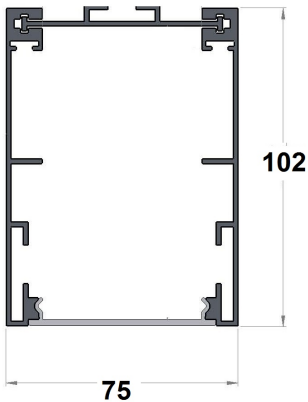
### Description

75\*102mm Aluminum profile  
with PMMA diffuser fitted with  
LED strip

120°viewing angle

Interior design(IP20)

Mounting brackets for easy  
installation



Technical parameters:

Model Ref	LNS75102-X*140
Length	available in multiples of 140mm plus 4mm
Wattage/140mm	4.2W
lumens /140mm	680 lm
Lumen efficacy	162 lm/w
CRI	>80

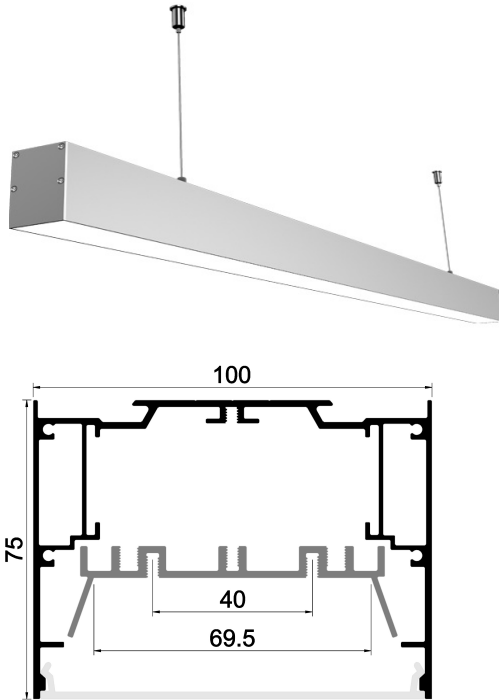
To order please specify an integral number of X in above model ref. for the required linear length which can only be a multiple of 140mm.



## LNS10075

### Description

100\*75mm Aluminum profile  
with PMMA diffuser fitted with  
LED strip  
120°viewing angle  
Interior design(IP20)  
Mounting brackets for easy  
installation



### Technical parameters:

Model Ref	LNS10075-X*140
Length	available in multiples of 140mm plus 4mm
Wattage/140mm	4.2 W
lumens /140mm	680 lm
Lumen efficacy	162 lm/w
CRI	>80

To order please specify an intergral number of X in above model ref. for the required linear length which can only be a multiple of 140mm.

RECESSED

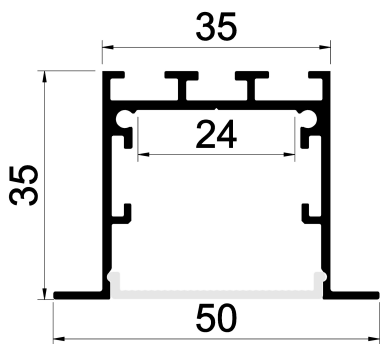




## LNR5035

### Description

35\*35mm Aluminum profile  
with PMMA diffuser fitted with  
LED strip  
120°viewing angle  
Interior design(IP20)  
Mounting brackets for easy  
installation

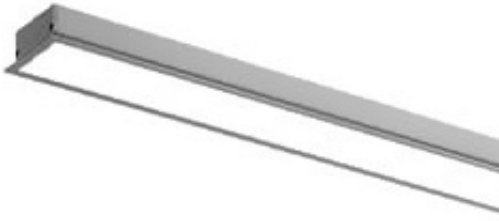


### Technical parameters:

Model Ref	LNR5035-X*140
Length	available in multiples of 140mm plus 15mm
Wattage/140mm	2.1 W
lumens /140mm	340 lm
Lumen efficacy	162 lm/w
CRI	>80

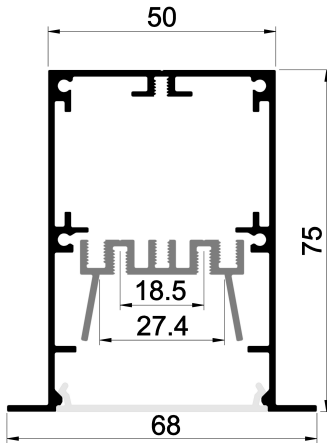
To order please specify an intergral number of X in above model ref. for the required linear length which can only be a multiple of 140mm.

## LNR6875



### Description

68\*75mm Aluminum profile  
with PMMA diffuser fitted with  
LED strip  
120°viewing angle  
Interior design(IP20)  
Mounting brackets for easy  
installation

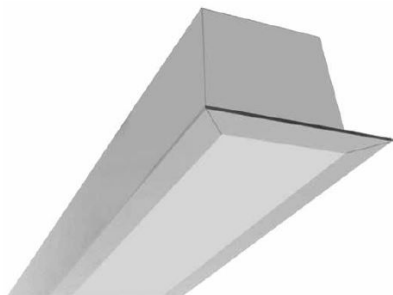


### Technical parameters:

Model Ref	LNR6875-X*140
Length	available in multiples of 140mm plus 18mm
Wattage/140mm	2.1 W
lumens /140mm	340 lm
Lumen efficacy	162 lm/w
CRI	>80

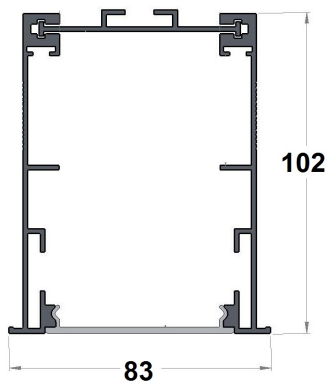
To order please specify an integral number of X in above model ref. for the required linear length which can only be a multiple of 140mm.

# LNR83102



## Description

83\*102mm Aluminum profile  
with PMMA diffuser fitted with  
LED strip  
120°viewing angle  
Interior design(IP20)  
Mounting brackets for easy  
installation



## Technical parameters:

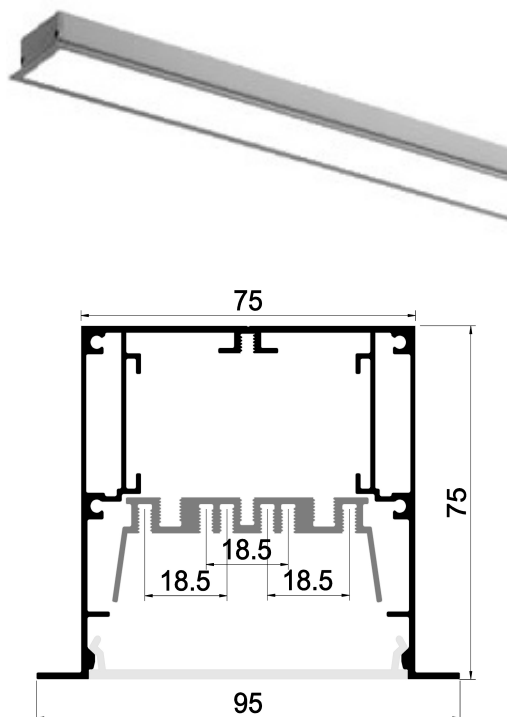
Model Ref	LNR83102-X*140
Length	available in multiples of 140mm plus 12mm
Wattage/140mm	4.2W
lumens /140mm	680 lm
Lumen efficacy	162 lm/w
CRI	>80

To order please specify an intergral number of X in above model ref. for the required linear length which can only be a multiple of 140mm.

## LNR9575

### Description

95\*75mm Aluminum profile  
with PMMA diffuser fitted with  
LED strip  
120°viewing angle  
Interior design(IP20)  
Mounting brackets for easy  
installation



### Technical parameters:

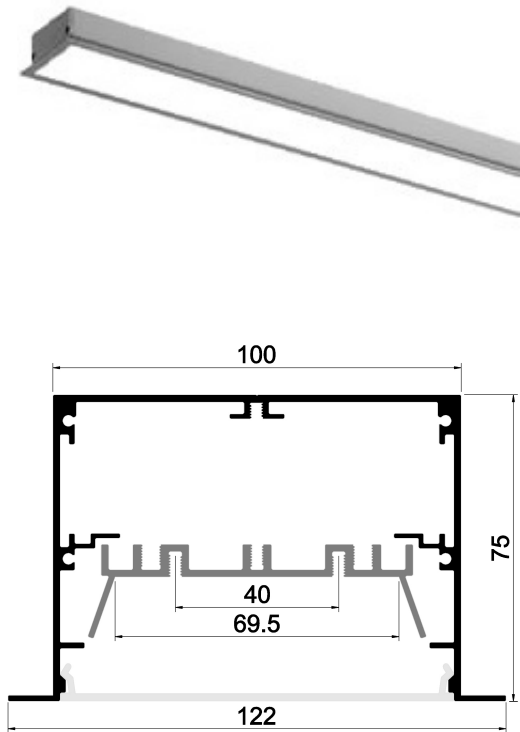
Model Ref	LNR9575-X*140
Length	available in multiples of 140mm plus 18mm
Wattage/140mm	4.2W
lumens /140mm	680 lm
Lumen efficacy	162 lm/w
CRI	>80

To order please specify an intergral number of X in above model ref. for the required linear length which can only be a multiple of 140mm.

**LNR12275**

**Description**

122\*75mm Aluminum profile  
with PMMA diffuser fitted with  
LED strip  
120°viewing angle  
Interior design(IP20)  
Mounting brackets for easy  
installation



**Technical parameters:**

Model Ref	LNR12275-X*140
Length	available in multiples of 140mm plus 18mm
Wattage/140mm	4.2W
lumens /140mm	680lm
Lumen efficacy	162 lm/w
CRI	>80

To order please specify an intergral number of X in above model ref. for the required linear length which can only be a multiple of 140mm.

## Connection modules

L-  
module



T-  
module



X-  
module



## Options ( if required add below suffix to model ref.)

DALI : for DALI dimming

DEB : for 0-10V dimming

3K : for 3000K color temperature

4K : for 4000K color temperature

5K : for 5000K color temperature





***maJELITE***  
THE LIGHTING LANGUAGE

**maJELITE** guarantees its customers a peace of mind and satisfaction on all purchased products. Our guarantee not only represents our level of commitment towards our valuable customers but also our confidence in our products. This guarantee is valid on all components of the product from the date of purchase for 5 years against manufacturing defects. All our customers can rest assured that they are working with a top quality and reliable product and a company with a sense of responsibility.



# General Sales & Delivery Conditions

The acceptance of an order by **MAJELITE** supposes in all cases that the buyer understands and agrees with the following general conditions of sale and delivery:

1. All orders should be placed in writing, by fax or any other written means and under no circumstances we shall accept the cancellation nor the alteration of a confirmed order.
2. All quotes, whether written or verbal, do not constitute a commitment and do not in any way oblige us to accept the order. All orders or undertakings are only valid if they have been ratified by **MAJELITE**
3. Delivery times will be effected within the agreed period and they do not constitute a commitment. Delivery times given by **MAJELITE** are for information only. Any delays which occur, do not authorize the buyer to cancel the order nor to apply any penalties or claim indemnities, unless there is an agreement to the contrary.
4. **MAJELITE** reserve the right to cancel any order if for reasons beyond our control such as industrial action, labor disputes etc. Orders for any specially manufactured goods can not be cancelled by the buyer, without our written consent, in which case all costs up to cancellation date will be borne by the buyer.
5. Once goods have been handed over to the transport company, delivery is deemed to have been carried out correctly. We are not responsible for any breakages which may occur during transportation. The buyer should charge these to transport company. We will be happy to assist the buyer with any such reclamation.
6. Measurements given in this catalogue are millimeters. We reserve the right to introduce any modifications deemed necessary to meet the requirements of market trends.
7. Complaints will only be valid if the fault is reported to us within 7 days of the receipt of goods. If a fault is established and goods are kept in their original conditions **MAJELITE** will take the appropriate measures.
8. Parties subject to any disputes, doubts or divergences that may arise from the interpretation or fulfillment of these conditions, will renounce their statute laws and will submit to the law of Sultanate of Oman.



■ ■



***Majelite***  
*THE LIGHTING LANGUAGE*

**Majees Lighting Industries L.L.C**  
P.O. Box 20, Sohar Industrial Estate,  
Sultanate of Oman Tel : +968 26752929  
Fax: +968 26751722  
E-mail: [info@majelite.com](mailto:info@majelite.com)  
[www.majelite.com](http://www.majelite.com)

