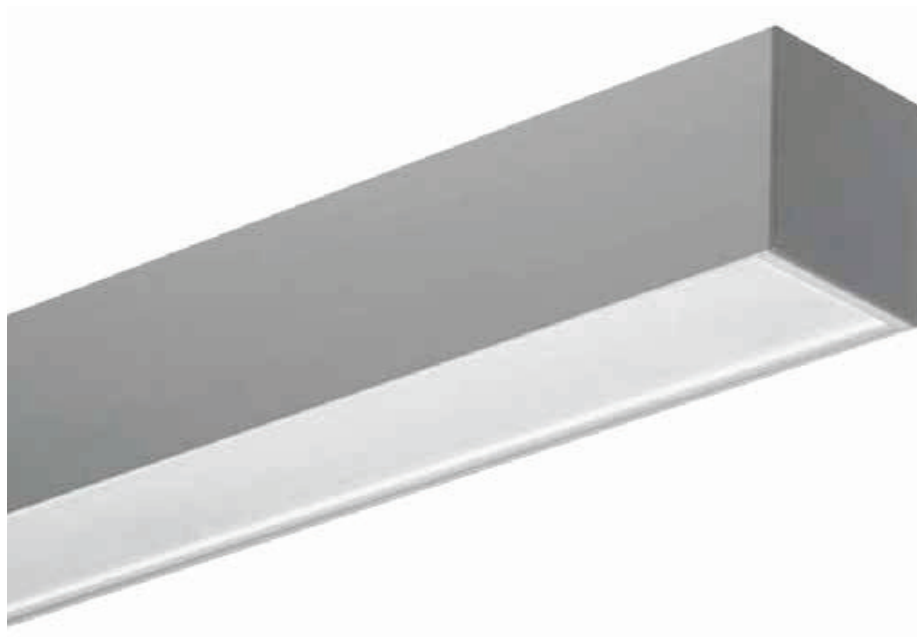


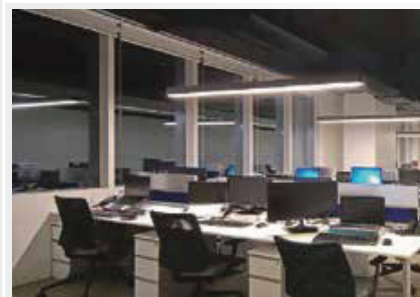
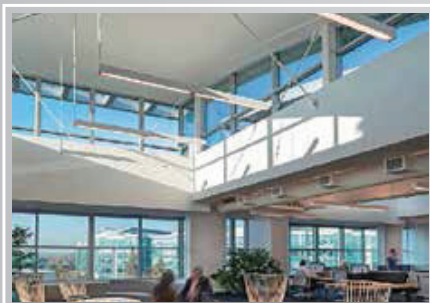
LNS



IP 40 CLASS I Ⓢ 960°C ⚡ Ⓢ Ⓢ

28

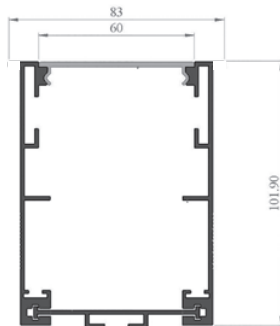
*maJELITE*



- Body** : in extruded aluminum, chemically treated surface to corrosion class II by high pressure spraying at 2.5 bar before its finally electro-statically powder coated with a 60 micron thermo-hardened polyurethane powder, stabilized and UV protected.
- Optics** : made of high temperature UV stabilized PMMA 3-layer material. Excellent optical characteristics with high transmission, diffusion rate, special micro embossing, and free static treatment.
- Electrical** : 240v/50Hz supply, 105<sup>o</sup> heat resistant PVC wire, 3-P terminal block in polyamide material.
- Options** : different dimensions, lumens output, wattages, and other variants are available upon request. Please refer to page no 170 for some common variants and. add suffix to below model references whenever applicable.

Model Ref.	LED Lumens / Wattage	L x W x H (mm)
LNS856-2300/18	2900/16.4	580x74x102
LNS8116-4600/36	5800/32.8	1160x74x102
LNS8146-5750/45	7250/41.4	1460x74x102
LNS8168-6900/54	8700/49.2	1680x74x102

**Note** : Lumens & Wattages are subject to change due to the fast developments in LED technology.



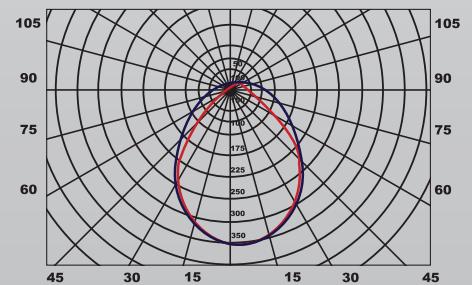
## How to Specify :

74mm wide Recessed linear modular fitting made of extruded aluminum, powder coated to corrosion class II, with self latching micro embossing 3-layer LED diffuser. Length : 1160mm , Height : 102mm

**MAJELITE**

29

Luminous Intensity Distribution



Luminous intensity (cd/klm) in level C 0° - 180°  
Luminous intensity (cd/klm) in level C 90° - 270°