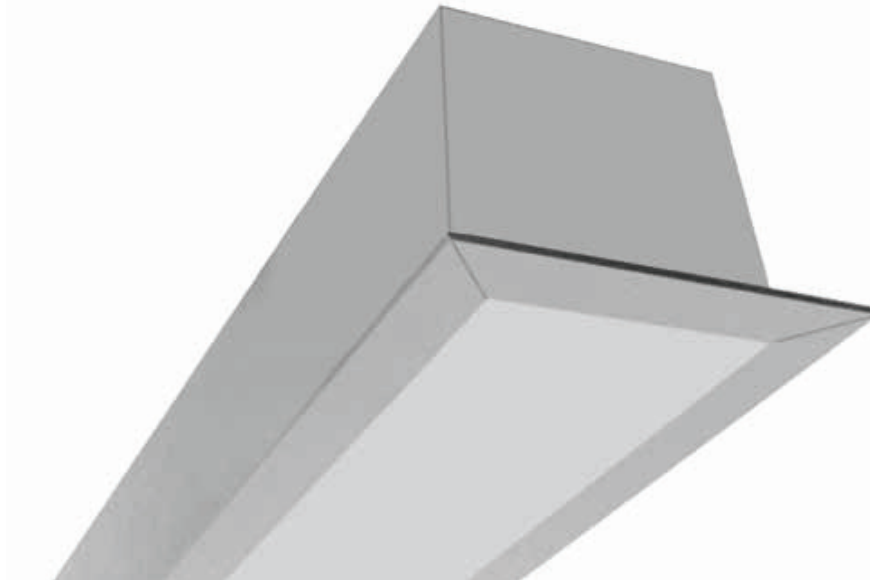


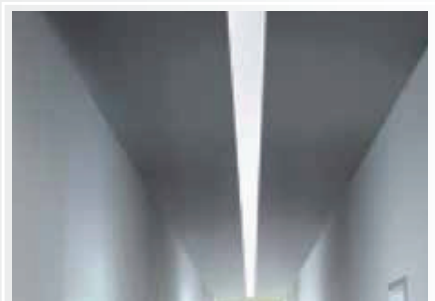
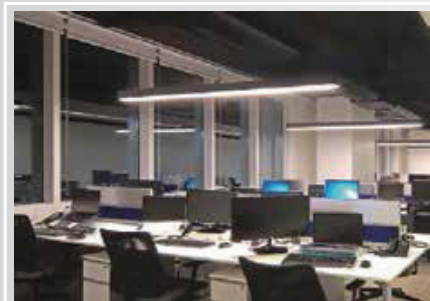
LNS



IP 40 CLASSI  960°C   

102

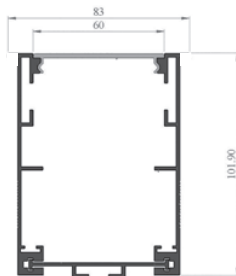
*maJELITE*



- Body** : in extruded aluminum profile , chemically treated surface to corrosion class II by high pressure spraying at 2.5 bar before its finally electro-statically powder coated with a 60 micron thermo-hardened polyurethane powder, stabilized and UV protected.
- Optics** : made of stabilized and UV protected opal diffuser.
- Electrical** : 240v/50Hz supply, 105° heat resistant PVC wire, 3-P terminal block in polyamide material.
- Options** : LED options and other variants are also available upon request. Please add suffix STR for LED recessed options to the code and specify linear length.

Model Ref.	Lamp(s) Wattage, Holder	L x W x H (mm)
LNS128	1X28W, G5	1200X74X102
LNS135	1X35W, G5	1500X74X102
LNS228	2X28W, G5	1200X74X1020
LNS235	2X35W, G5	1500X74X102
RK	Recessed Kit	
SK	Suspention Kit	

**Note** : Fittings can be supplied with dimmable ballasts ,and emergency conversion kits upon request. Please refer to page No. 170 for some common variants.



Utilization Factors

Model LNR-228

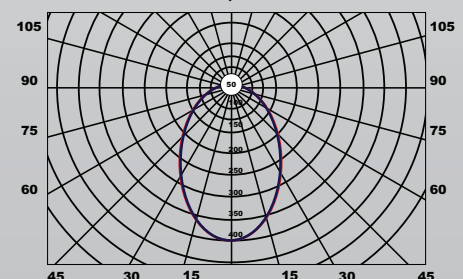
Room Reflectance			Room Index									
C	W	F	0.75	1.00	1.25	1.50	2.00	2.50	3.00	4.00	5.00	
0.7	0.5	0.2	0.51	0.57	0.61	0.63	0.67	0.69	0.70	0.72	0.74	
0.7	0.3	0.2	0.47	0.53	0.57	0.60	0.64	0.67	0.68	0.71	0.72	
0.7	0.1	0.2	0.45	0.50	0.55	0.58	0.62	0.65	0.67	0.69	0.71	
0.5	0.5	0.2	0.50	0.55	0.59	0.62	0.65	0.67	0.68	0.70	0.71	
0.5	0.3	0.2	0.47	0.52	0.56	0.59	0.63	0.65	0.66	0.68	0.70	
0.5	0.1	0.2	0.44	0.50	0.54	0.57	0.61	0.63	0.65	0.67	0.69	
0.3	0.5	0.2	0.49	0.54	0.58	0.60	0.63	0.65	0.66	0.67	0.68	
0.3	0.3	0.2	0.46	0.52	0.55	0.58	0.61	0.63	0.65	0.66	0.67	
0.3	0.1	0.2	0.44	0.49	0.53	0.56	0.60	0.62	0.63	0.65	0.67	
0.0	0.0	0.0	0.43	0.48	0.52	0.54	0.58	0.59	0.61	0.62	0.63	

LOR=71.2%, DLOR=71.2%, ULOR=0.0%, SHR NOM=1.50, SHR MAX=1.60, SHR TR=1.80  
 UF tables for other lamp wattage are available upon request.

## How to Specify :

Recessed /surface mounted  
 made of extruded aluminum  
 profile with self latching mechanism. similar to majelite LNR.....

### Luminous Intensity Distribution



Luminous intensity (cd/klm) in level C 0° - 180°  
 Luminous intensity (cd/klm) in level C 90° - 270°