

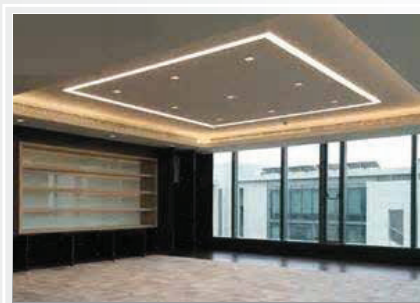
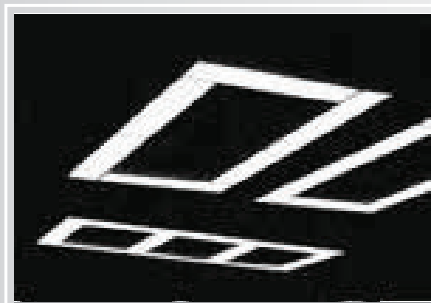
LNR



IP 40 CLASSI \oplus 960°C ∇ $\text{\textcircled{F}}$ $\text{\textcircled{C}}$ CE

14

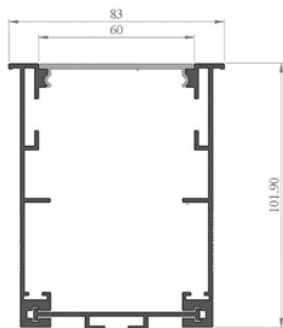
maJELITE



- Body** : in extruded aluminum, chemically treated surface to corrosion class II by high pressure spraying at 2.5 bar before its finally electro-statically powder coated with a 60 micron thermo-hardened polyurethane powder, stabilized and UV protected.
- Optics** : made of high temperature UV stabilized PMMA 3-layer material. Excellent optical characteristics with high transmission, diffusion rate, special micro embossing, and free static treatment.
- Electrical** : 240v/50Hz supply, 105^o heat resistant PVC wire, 3-P terminal block in polyamide material.
- Options** : different dimensions, lumens output, wattages, and other variants are available upon request. Please refer to page no 170 for some common variants and add suffix to below model reference, wherever applicable.

Model Ref.	LED Lumens / Wattage	L x W x H (mm)
LNR856-2300/18	2900/16.4	580x83x102
LNR8116-4600/36	5800/32.8	1160x83x102
LNR8146-5750/45	7250/41.4	1460x83x102
LNR8168-6900/54	8700/49.2	1680x83x102

Note : Lumens & Wattages are subject to change due to the fast developments in LED technology.



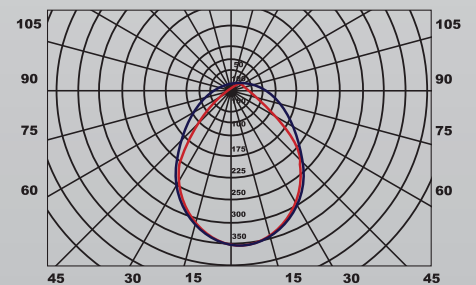
How to Specify :

83mm wide Recessed linear modular fitting made of extruded aluminum, powder-coated to corrosion class II, with self latching micro e bossing 3-layer LED diffuser. Length : 1160mm , Height : 102mm

MAJELITE

15

Luminous Intensity Distribution



Luminous intensity (cd/klm) in level C 0° - 180°
Luminous intensity (cd/klm) in level C 90° - 270°