

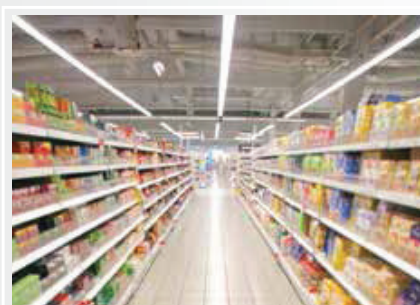
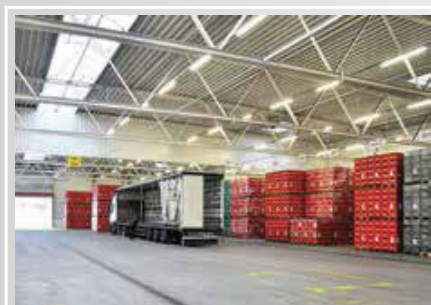
IBL



IP 54 CLASS I Ⓢ 960°C ⚡ Ⓢ CE

64

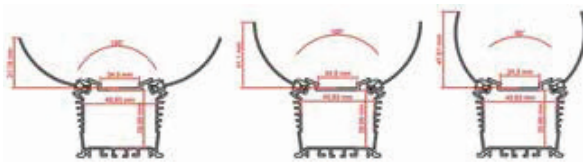
maJELITE



- Body** : made of 6063 extruded and anodized aluminum alloy.
- Optics** : excellent luminous transmittance and high of optical efficiency PC / Silicone lenses with self sealing ability, high thermal stability, UV resistant.
- Electrical** : 240v/50Hz supply, 180° heat resistant silicone wires, 3-P terminal block in polymade material.
- Options** : different lumens output, wattages, luminous distribution beam angles and other variants are available upon request. Please refer to page no 170 for some common variants and add suffix to below model references, wherever applicable.

Model Ref.	LED Lumens / Wattage	L x W x H (mm)
IBL-5220/36	5800/32.8	1140x120x80
IBL-7164/53	7960/48.4	1440x120x80

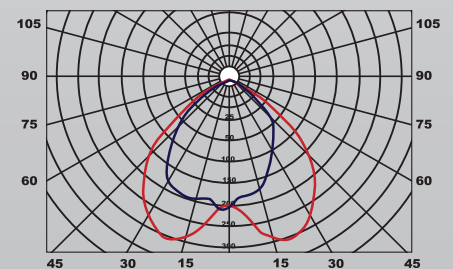
Note : Lumens & Wattages are subject to change due to the fast developments in LED technology.



How to Specify :

..... lumens/watt Linear industrial batten made off 6063 extruded aluminum alloy with adjustable reflector.

Luminous Intensity Distribution



Luminous intensity (cd/klm) in level C 0° - 180°
Luminous intensity (cd/klm) in level C 90° - 270°