

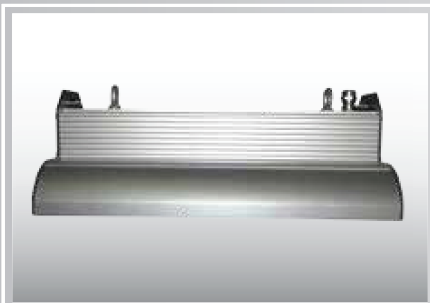
HBL



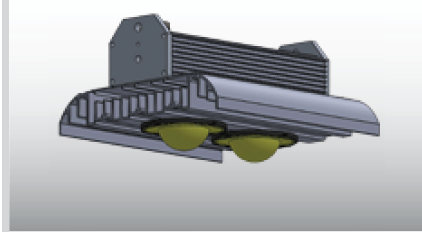
IP 67 CLASSI \oplus 960°C ∇ $\text{\textcircled{C}}$ CE

62

maJELITE



HBL-C



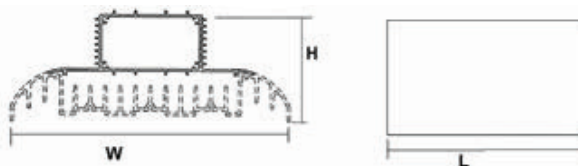
PS



- Body** : made of 6063 extruded and anodized aluminum alloy.
- Optics** : excellent luminous transmittance and high of optical efficiency PC / Silicone lenses with self sealing ability, high thermal stability, UV resistant. IK08 /IK10, IP65.
- Electrical** : 240v/50Hz supply, 180° heat resistant silicone wires, 3-P terminal block in polymade material.
- Options** : different lumens output, wattages, luminous distribution beam angles and other variants are available upon request. Please refer to page no 170 for some common variants and add suffix to below model references, wherever applicable.

Model Ref.	LED Lumensns / Wattage	L x W x H (mm)
HBL-C-7600/60	8020 / 54	350 X 260X 100
HBL-C-15240/120	16040/ 108	450 X 260X 100
HBL-C-22860/180	24060 / 162	550 X 260X 100
HBL-10400/ 90	11000 / 82	350 X 260X 100
HBL-15500/ 135	16300 / 123	400 X 260X 100
HBL-26000/ 225	28600 / 205	450 X 260X 100
HBL-31100 /270	34100 / 246	550 X 260X 100
PS-KIT	For Petrol Station	

Note : Lumens & Wattages are subject to change due to the fast developments in LED technology.



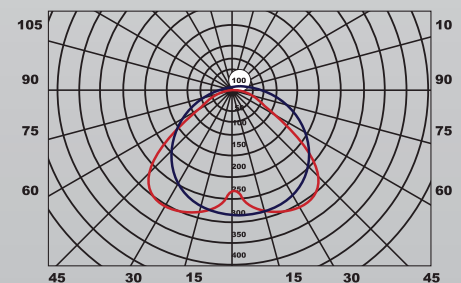
How to Specify :

..... lumens/watt Highbay made of 6063 extruded alloy with separate dual heat dissipation system for extreme temperature conditions. IK08, IP65

MAJELITE

63

Luminous Intensity Distribution



Luminous intensity (cd/klm) in level C 0° - 180
Luminous intensity (cd/klm) in level C 90° - 270