

FL



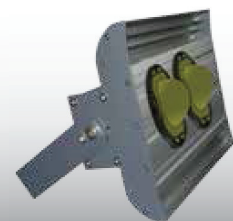
IP 67 CLASSI Ⓢ 960°C Ⓢ Ⓢ Ⓢ CE

66

maJELITE



FL-C



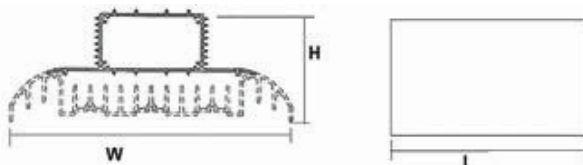
- Body** : made of 6063 extruded and anodized aluminum alloy.
- Optics** : excellent luminous transmittance and high of optical efficiency PC / Silicone lenses with self sealing ability, high thermal stability, UV resistant. IK08 /IK10, IP65.
- Electrical** : 240v/50Hz supply, 180° heat resistant silicone wires, 3-P terminal block in polymade material. different lumens output, wattages, luminous
- Options** : distribution beam angles and other variants are available upon request. Please refer to page no 170 for some common variants and add suffix to below model references, wherever applicable.

How to Specify :

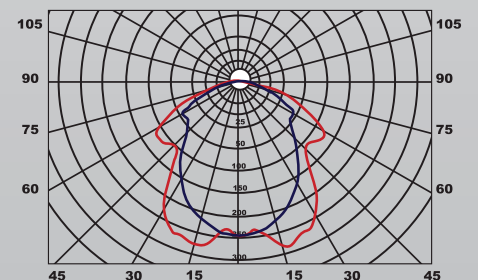
..... lumens/watt Floodlight made of 6063 extruded alloy with separate dual heat dissipation system for extreme temperature conditions. IK08, IP65

Model Ref.	LED Lumens / Wattage	L x W x H (mm)
FL-C-7600/60	8020 / 54	350 X 260X 100
FL-C-15240/120	16040/ 108	450 X 260X 100
FL-C-22860/180	24060 / 162	550 X 260X 100
FL-10400/ 90	11000 / 82	350 X 260X 100
FL-15500/ 135	16300 / 123	400 X 260X 100
FL-26000/ 225	28600 / 205	450 X 260X 100
FL-31100 /270	34100 / 246	550 X 260X 100

Note : Lumens & Wattages are subject to change due to the fast developments in LED technology.



Luminous Intensity Distribution



Luminous intensity (cd/klm) in level C 0° - 180°
Luminous intensity (cd/klm) in level C 90° - 270°