

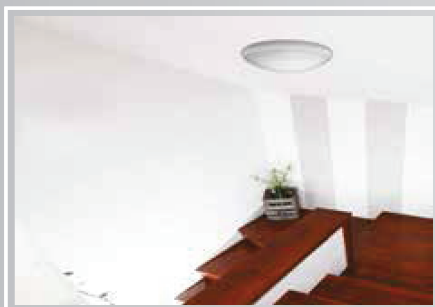
CSO



IP 54 CLASS I  960°C  

120

*maJELITE*

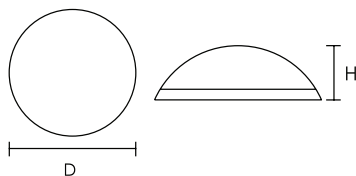


- Body** : made of Polycarbonate body, all stabilized and UV protected, not to be exposed to direct sun light.
- Optics** : made of high temperature Polycarbonate opal diffuser.
- Electrical** : 240v/50Hz supply, 105° heat resistant PVC wire, 3-P terminal block in polyamide material.
- Options** : other variants are available on request, wherever applicable. pls refer to page no 170 for some common variants, wherever applicable.

## How to Specify :

Surface mounted circular fitting with UV stabilized PC housing & diffuser - IP 54 similar to Majelite CSO....

Model Ref.	LED Lumens / Wattage	D x H (mm)
CSO-118	18W,G24	330x130
CSO-162D	16W-2D, GR8q	330x130
CSO126	26W,G24	330x130
CSO282D	28W-2D, GR10q	330x130
CSO218	2x18W, G24	330x130
CSO226	2x26W,G24	330x130



Luminous Intensity Distribution

