

BH

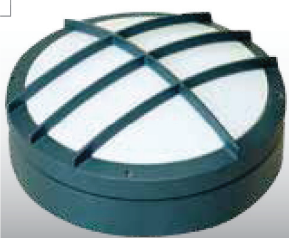


IP 65 CLASS I \oplus 960°C ∇ $\text{\textcircled{F}}$ $\text{\textcircled{C}}$ CE

70

maJELITE

G



GH



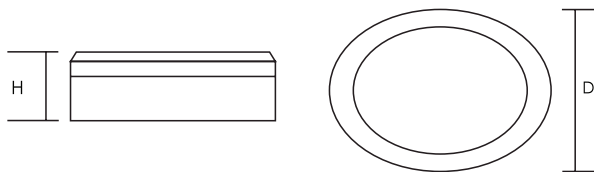
H



- Body** : made of high pressure die-cast A360 aluminum alloy finished to corrosion class III by high pressure spraying at 2.5 bar before its finally electro-statically powder coated with a 60 micron thermo-hardened polyester powder, stabilized and UV protected.
- Optics** : is made of toughened glass.
- Electrical** : 240v/50Hz supply, 105^o heat resistant PVC wire, 3-P terminal block in polyamide material.
- Options** : other variants are available on request. Please add suffix to the code for different cover options, wherever applicable. Suffix 'GH' is available only for 350 mm dia. Please refer to page no 170 for some common variants.

Model Ref.	LED Lumens / Wattage	D x H (mm)
BH275-1900/14	2370/13.1	275x90
BH350-2632/21	3290/19.3	350x142

Note : Lumens & Wattages are subject to change due to the fast developments in LED technology.



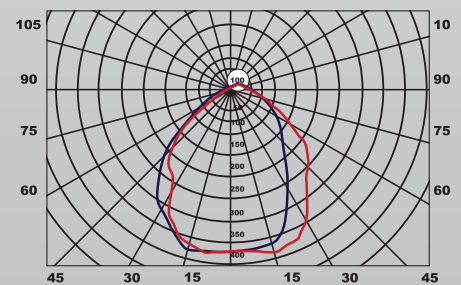
How to Specify :

Round Bulkhead made of dia cast aluminum body and tempered frosted glass dif-fuser. Similar to Majelite BH.....

MAJELITE

71

Luminous Intensity Distribution



Luminous intensity (cd/klm) in level C 0° - 180°
Luminous intensity (cd/klm) in level C 90° - 270°