

BH

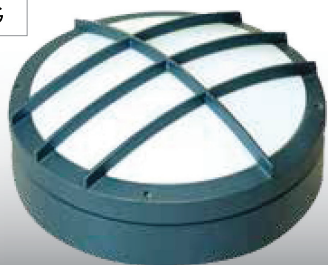


IP 65 CLASS I  960°C  

156

maJELITE

G



GH



H



Body : made of high pressure die-cast A360 aluminum alloy finished to corrosion class III by high pressure spraying at 2.5 bar before its finally electro-statically powder coated with a 60 micron thermo-hardened polyester powder, stabilized and UV protected.

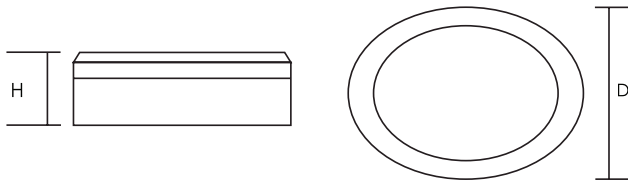
Optics : is made of toughened glass.

Electrical : 240v/50Hz supply, 105° heat resistant PVC wire, 3-P terminal block in polyamide material.

Options : other variants are available on request. Please add suffix to the code for different cover options, wherever applicable. Suffix 'GH' is available only for 350 mm dia. Please refer to page no 170 for some common variants.

How to Specify :

Round Bulkhead made of die cast aluminum body and tempered frosted glass diffuser. Similar to Majelite BH.....



Model Ref.	Lamp(s) Wattage, Holder	D x H (mm)
BH118	18W-G24	275x90
BH126	26W-G24	275x90
BH162D	16W, 2D GR8	275x90
BH218	2X18W, G24	350x142
BH226	2X26W, G24	350x142
BH282D	28W,2D GR10q	350x142
BH70H	70W, Halide, E27	350x142